

TVACTM II KT

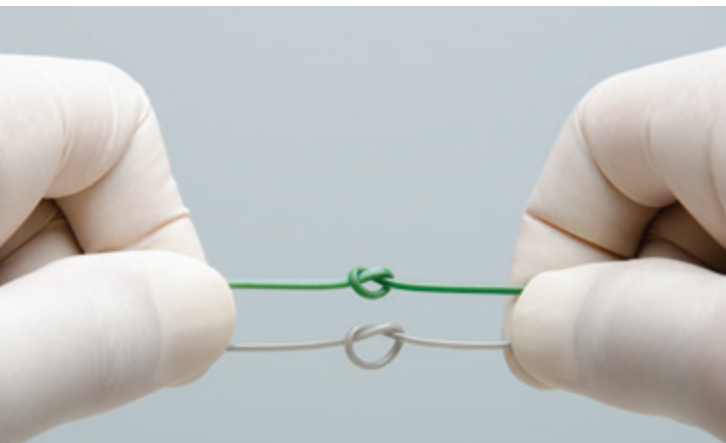
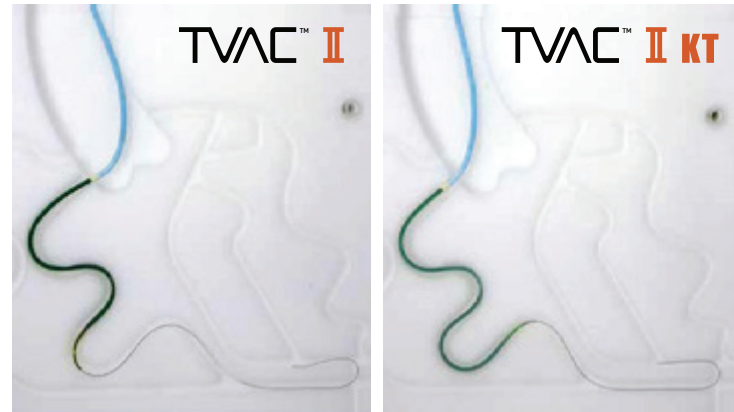
THROMBUS ASPIRATION CATHETER
PROVIDING DISTAL DELIVERY WITH CONFIDENCE



Features:

- **Increased vascular trackability**

Increased flexibility and lubricity from the catheter tip to the distal shaft enable further improvement of trackability.

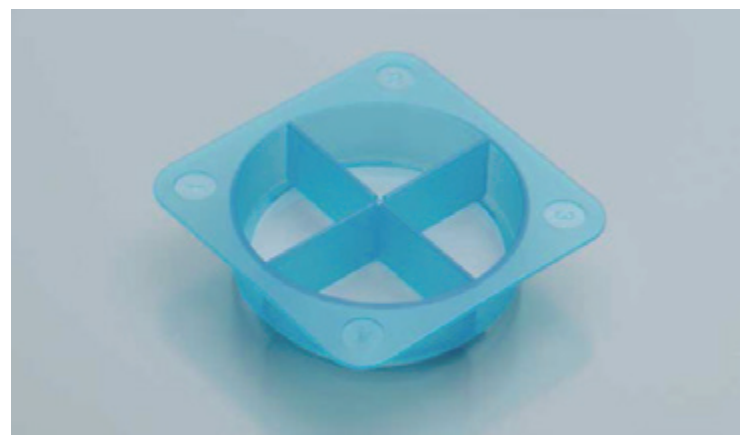


- **New type collection filter (Cell strainer)**

A large size collection filter (with partitions) is included. It is designed for easy use by placing the filter on a waste fluid beaker (100 ml to 500 ml: Beaker sold separately).

- **Anti-kinking braid tubing**

The unique braid tubing provides for superior kink resistance in tortuous lesions and when multiple catheter insertions are required.

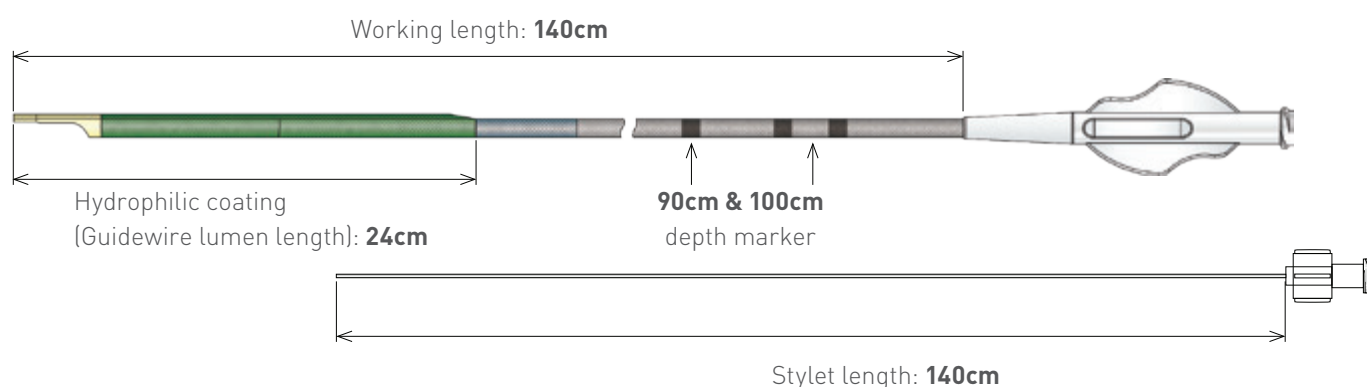




• Lineup with stylet equipped

A pre-inserted stylet increases kink resistance and offers greater pushability during catheter delivery. **Stylet must be removed prior to aspiration.*

Catheter design



Ordering information

Product name	Model No.	Outer Diameter		Hydrophilic coating length	Compatible Guide Catheter (min. inner diameter)	Compatible Guidewire (max. outer diameter)
		Distal	Proximal			
TVAC II KT 6Fr	Catheter Set w/ Syringe 6Fr	5.3F	4.2F	240mm	6F (1.78mm/ 0.070 inch)	0.36mm (0.014 inch)
TVAC II KT 7Fr	Catheter Set w/ Syringe 7Fr	5.6F	4.8F		7F (2.03mm/ 0.080 inch)	

Accessories

Extension tube (length 300mm), aspiration syringe (volume 60ml), collection filter (Cell strainer), blunt needle, two-way stopcock.

Nipro Corporation Japan is a leading global healthcare company established in 1954. With over 35,000 employees worldwide, Nipro serves the Medical Device, Pharmaceutical, and Pharmaceutical Packaging industries.

Nipro is dedicated to providing interventional cardiologists and vascular surgeons with tools to perform delicate lifesaving and life-enhancing procedures to treat patients with vascular and coronary diseases.

We develop, manufacture, and market cutting-edge technology as well as the newest techniques, innovative solutions, and complex advancements to reshape the vascular space globally. Working hand in hand with physicians, we are focused on providing the best possible care for patients.

Nipro is dedicated to advancing the diagnosis and management of coronary artery disease worldwide as part of our promise to help people.

LIVE LONGER. LIVE BETTER.

